



*Promote and enable the safe, effective
use of powered access worldwide*

GUIDANCE ON BUYING A PRE-OWNED MEWP



CONTENTS

INTRODUCTION	2
LEGISLATION	2
DOCUMENTATION	3
MANUFACTURER'S COMPLIANCE PLATE AND DECALS	3
REGISTER THE MEWP WITH THE OEM	4
CROSS-BORDER PURCHASES	4
KNOW YOUR RESPONSIBILITIES	4
FURTHER READING	4

INTRODUCTION

Mobile Elevating Work Platforms (MEWPs) are considered to be one of the safest means of enabling temporary work at height. When buying a pre-owned MEWP, it is essential to ensure that the equipment complies with the relevant safety legislation and standards/codes of practice requirements in the country or region where it will be operating, before it is used. Every MEWP must be supplied in a safe working condition, with all safety devices functional.*

**Note: The scope of this document applies only to MEWPs that are in a serviceable and operationally safe condition and that are purchased through private sales or auctions.*



LEGISLATION

Acts and regulations are legal requirements (laws). Standards and codes of practice provide guidance on how to comply with the law. If you follow a standard or code of practice, you should be doing enough to comply with the law in your country or region.

Each country or region has safety legislation and/or standards that relate to the design, supply and safe use of MEWPs. These will typically cover:

- The design and manufacture of the MEWP and whether it can be sold or otherwise supplied for use in that country (applicable if importing a MEWP from another country)
- The information required to accompany the MEWP, e.g., a Declaration of Conformity
- The requirement to supply equipment in a safe working condition
- The requirement to provide a safe workplace

Other relevant legislation and standards may include:

- Road traffic/highways acts and codes of practice (e.g., for vehicle-mounted MEWPs)
- Sustainability requirements (e.g., engine emission directives/environmental protection agencies)
- MEWP design and safe use standards

This means in practice that:

- Suppliers of a MEWP should ensure that the MEWP meets legal, safety and operational requirements for the country they are selling or importing into
- Buyers should confirm that the documentation provided with the MEWP supports this before purchase

DOCUMENTATION

When buying a pre-owned MEWP, it is important to ensure each MEWP is supplied with the following documentation:

- Operator's manual or operating instructions specific to the make and model and in the primary language for the country the machine is being sold into
- Relevant certification documentation (e.g., EC declaration of conformity for the European region). Note: the date of certification should be based on when the MEWP was first placed on the market in that region
- Manufacturer Test Report (if required), produced when the machine is manufactured
- Documentation/records of modifications, including necessary evidence of conformity to relevant design standards; retrofits; and manufacturer's technical/safety bulletins



Maintenance records should also be supplied (if available), and should include:

- Maintenance history and related records
- Evidence of inspections, such as periodical, routine and thorough examination records
- Major inspection records

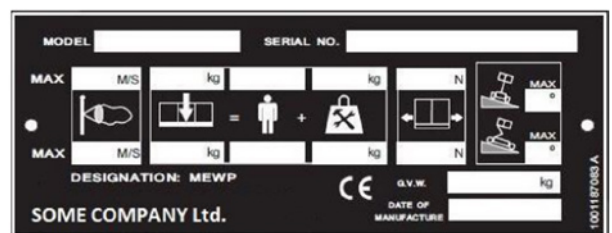
These records are required to demonstrate the safe working condition of the MEWP.

MANUFACTURER'S COMPLIANCE PLATE AND DECALS

Check the compliance plate to ensure it:

- Is permanently attached to the MEWP and is legible
- References the region(s) in which the MEWP conforms to the requirements (e.g., CE, ANSI, AUS, CSA)
- Provides the operating limits of the MEWP that match the operating manual (e.g., maximum rated load, wind speed, slope)
- Displays a serial number that matches the serial number on the MEWP (normally marked on the chassis)

You should also check that all decals are in place and legible, and in an official language. A list of all decals is typically given in the operator manual, otherwise check with the Original Equipment Manufacturer (OEM).



REGISTER THE MEWP WITH THE OEM

This will enable you to check that all relevant recommended safety updates have been carried out and you are notified of any future updates, safety bulletins or recalls.

CROSS-BORDER PURCHASES

Be aware that MEWP legislation (and standards) may differ significantly from region to region and between countries. For example, an ANSI-compliant MEWP for use in the USA may not meet the requirements of the European Union legislation and safety standards.

KNOW YOUR RESPONSIBILITIES

As the new owner of a MEWP, you must ensure that the machine is safe before putting it into use. A thorough inspection/examination by a qualified/competent person on receipt should be undertaken, confirming the documented history of the MEWP.

If you have any doubts regarding which legislation or standards apply in your country or region, you should contact the relevant workplace health and safety regulatory authority for advice.

FURTHER READING

- ➔ [Guidance for Major Inspections of Mobile Elevating Work Platforms](#)
- ➔ [Service, Inspection, and Maintenance of MEWPs](#)
- ➔ [Developing a MEWP Safe Use Program Guide](#)
- ➔ [IPAF CAP Assessment](#)





*Promote and enable the safe, effective
use of powered access worldwide*