



IPAF ASIA CONFERENCE & SHOWCASE 2019

未来已至 The Future is Now

吴小路
Lewis Wu

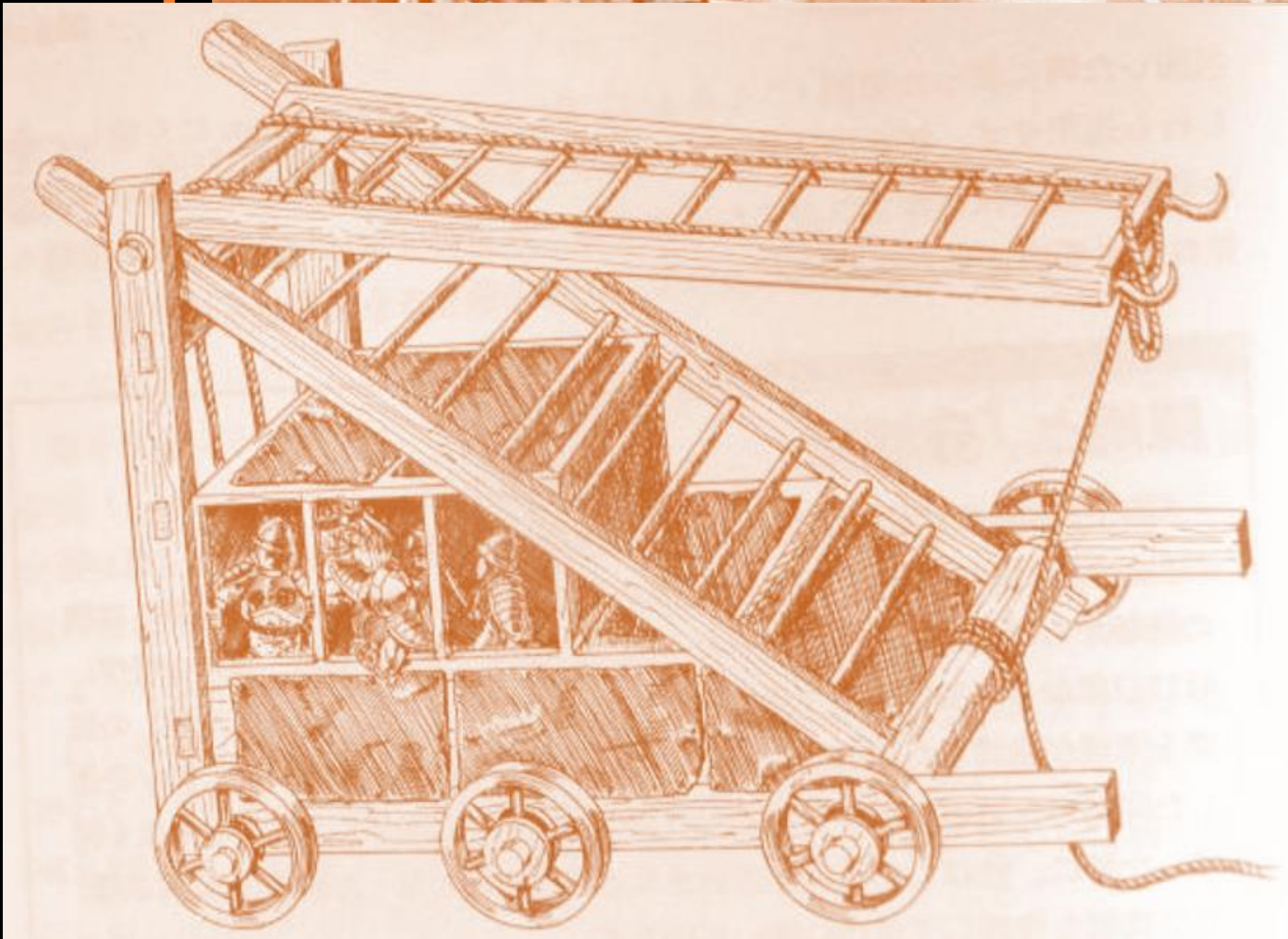
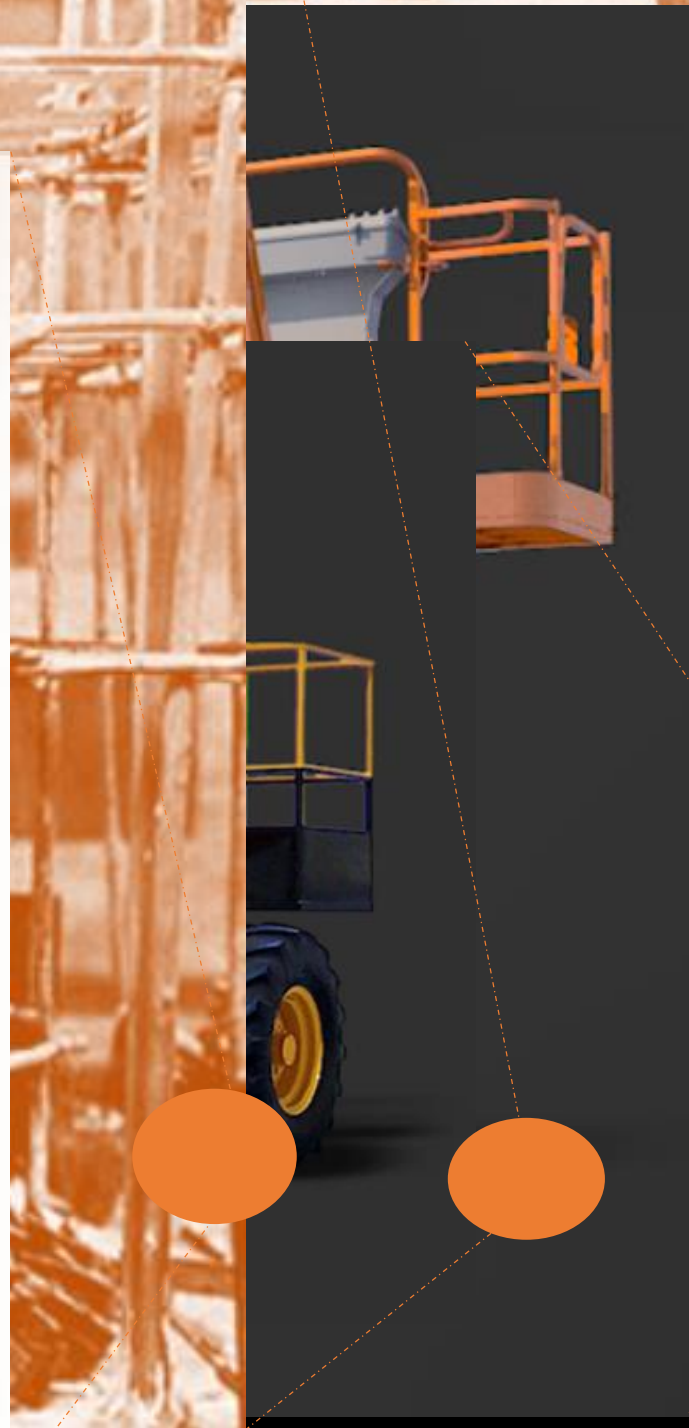
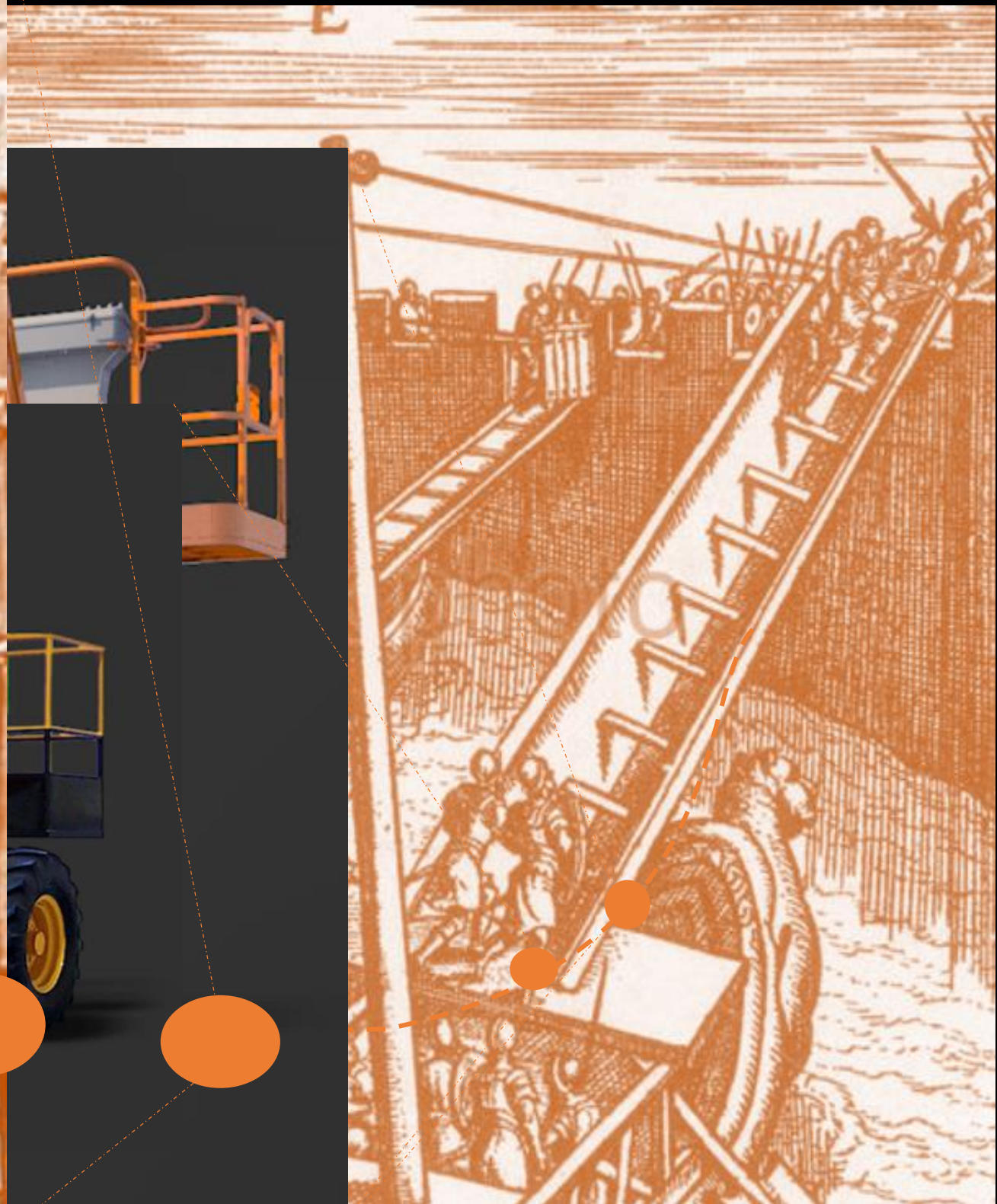
捷尔杰亚洲区市场总监
Director of Marketing, JLG Asia



IPAF ASIA CONFERENCE 2020
SEOUL, SOUTH KOREA
8TH-9TH JULY 2020



高空行业简史
A Brief History of
Our Industry



Time



未来会是怎样？

What will our future look like?

Performance



Time

全球重大趋势 Global Major Trends

影响长期技术发展方向的大趋势

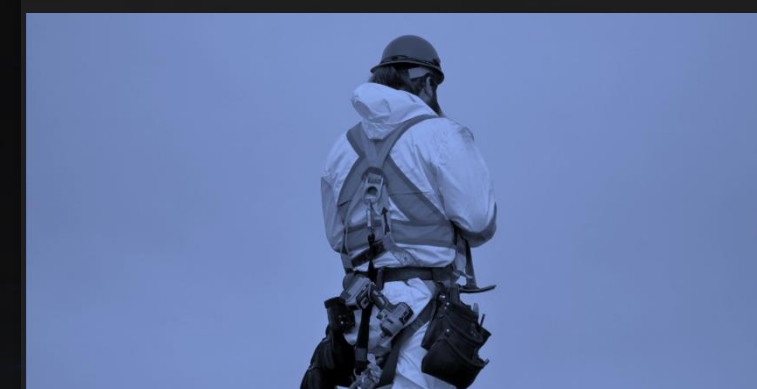
生产力驱动



数字化的未来



安全至上



数据是串联起所有趋势的关键

某地住宅建设工程由于劳动力短缺而**停工**

中国住宅劳动力**持续短缺**

中国的**劳动力短缺**正在演变成为一个极为可怕的问题

合格建筑工人短缺**妨碍**建筑市场发展

生产力驱动

Productivity Imperative

中国**建筑需求**持续走强，伴随的是建筑工人短缺

报道：劳动市场短缺并没有**放缓**的迹象

建筑产业由于极度缺乏**熟练工人**而遭到巨大打击

建筑工人报告：劳动力短缺**再次上升**







Home



X700AJ Control Panel

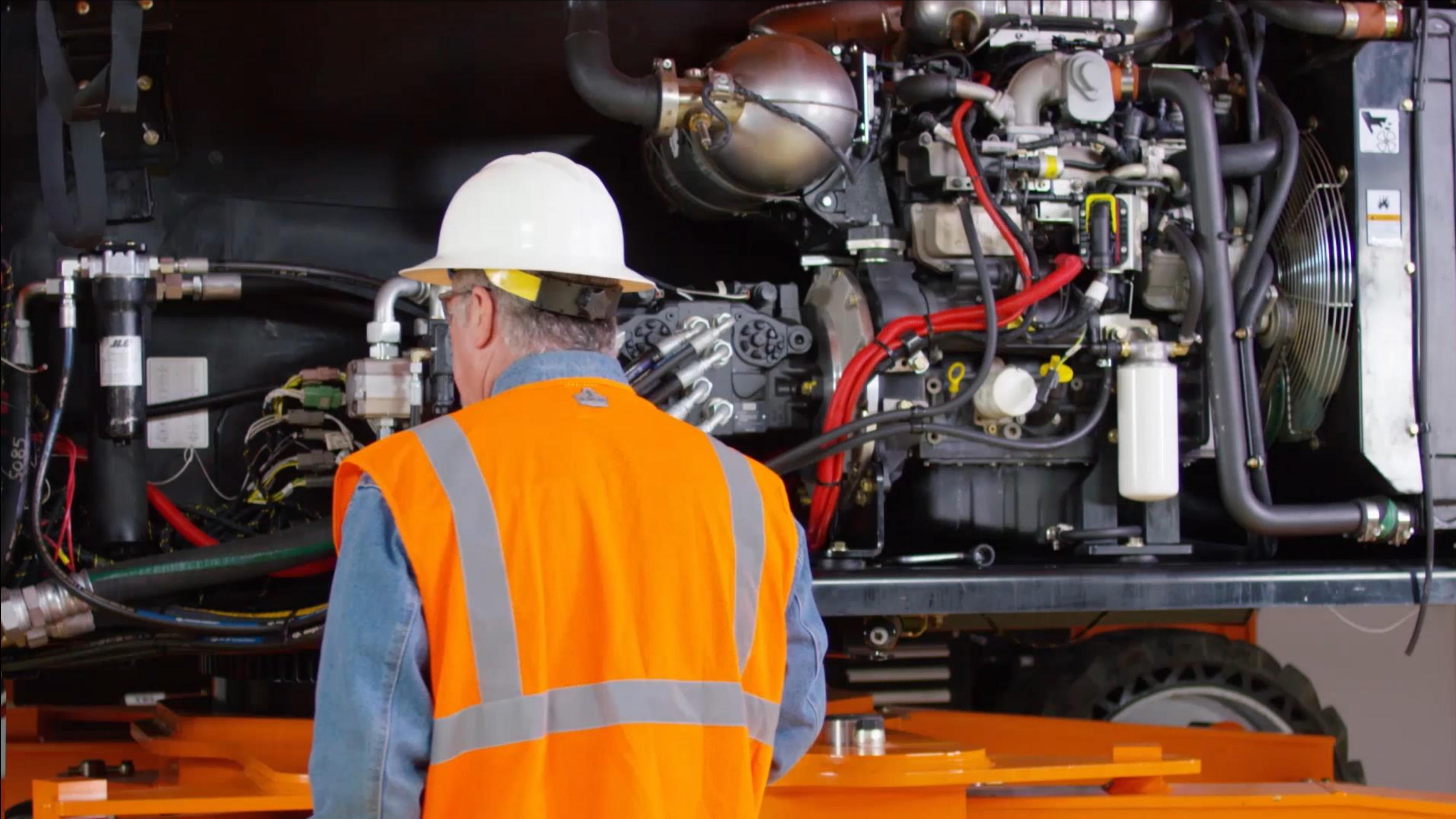
Boom 1/2: 0%

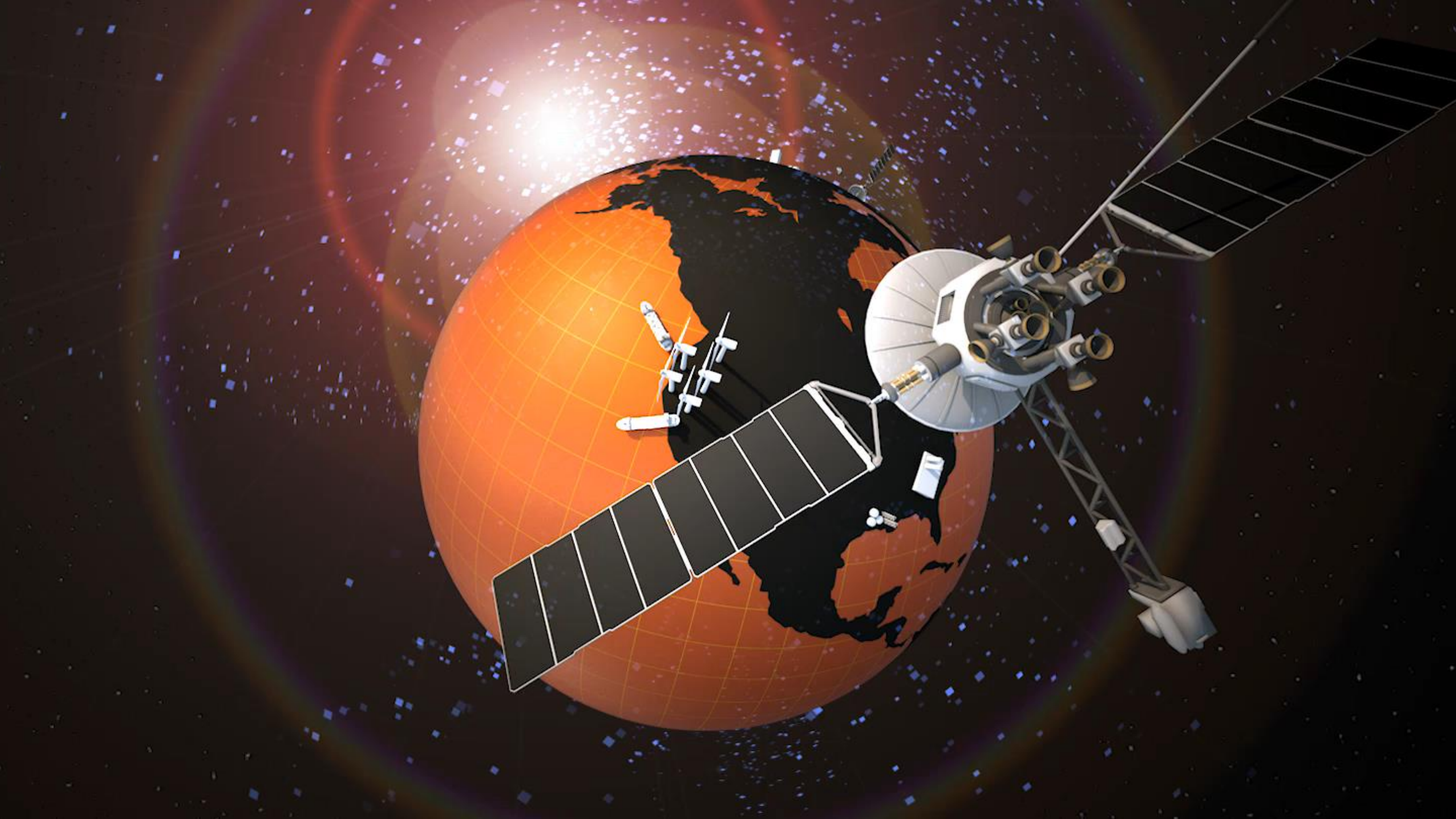
Boom 3: 0%

Rotation: 180°

Stabilizers: Stowed Restricted Unrestricted













CLEARSKY
REMOTE ANALYZER



CLEARSKY™
OTA SOFTWARE UPDATES

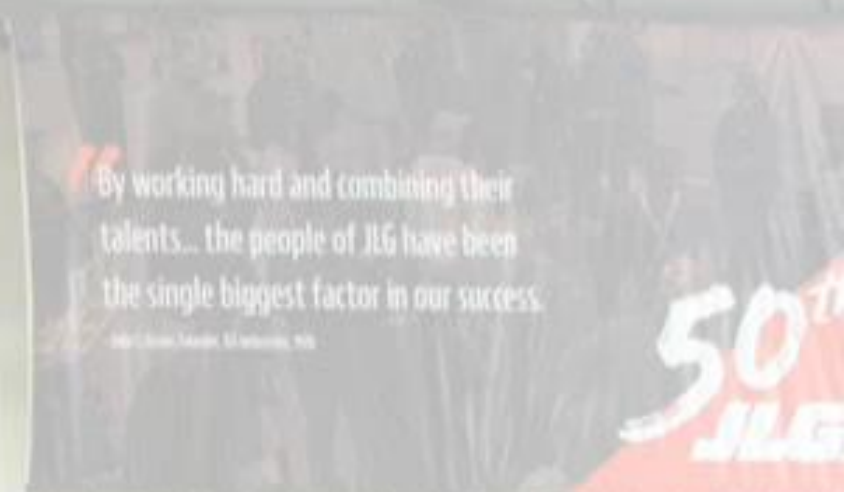
JLG LIFT
www.jlg.com

安全至上 Safety First

全球每年建筑行业死亡人数至少有 **60,000**

Globally, the construction industry accounts for at least **60,000** workplace deaths a year

JLG 特有双传感器负载称重系统
有效杜绝安全隐患



杰士 臂车特有缓冲功能

起升过程



JLG SkyGuard[®] 操作人员保护系统触发介绍



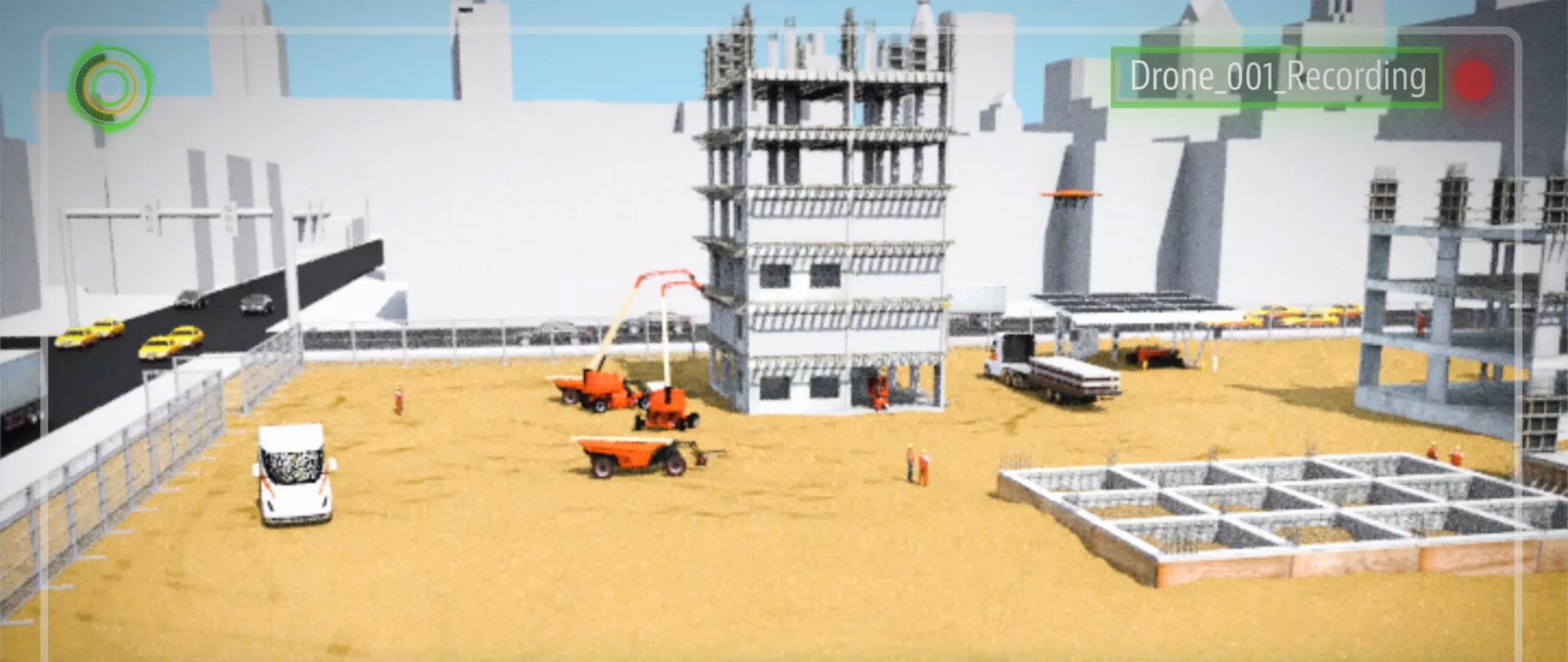




The Future 未来工地



Drone_001_Recording



Noise Levels



Air Quality





Remote Control Operation



谢谢!

Thank You!



