



MCWP & Hoist Safety: How Much Do You Know About It?

Angel Ibanez

IPAF Global representative for MCWP and Related Products

IPAF Asia Conference, Hangzhou, China, 17 July 2019



**IPAF ASIA CONFERENCE 2020
SEOUL, SOUTH KOREA
8TH-9TH JULY 2020**



What is a **MCWP**?

What is a MCWP?

Horizontal platform, climbing a vertical mast, to work on a façade



and what is a **Hoist**?

What is a construction Hoist?

Cabin climbing a vertical mast, to transport goods or people to different levels



How much do we know about

MCWPs and **Hoists**

SAFETY?

**Main
challenge
to answer this
question
is...**



Risk
PERCEPTION
is something
subjective



Risk
PERCEPTION
is something
subjective



Risk
PERCEPTION
is something
subjective



So, let's **start** with...

what can go **WRONG**?

Common mistakes with MCWP & Hoists

High risk
during
erection
and
dismantling
processes



Common mistakes with MCWP & Hoists

High risk
during
erection
and
dismantling
processes



Common mistakes with MCWP & Hoists

Operator:
“nothing can
go wrong
once the
machine has
been
installed
“

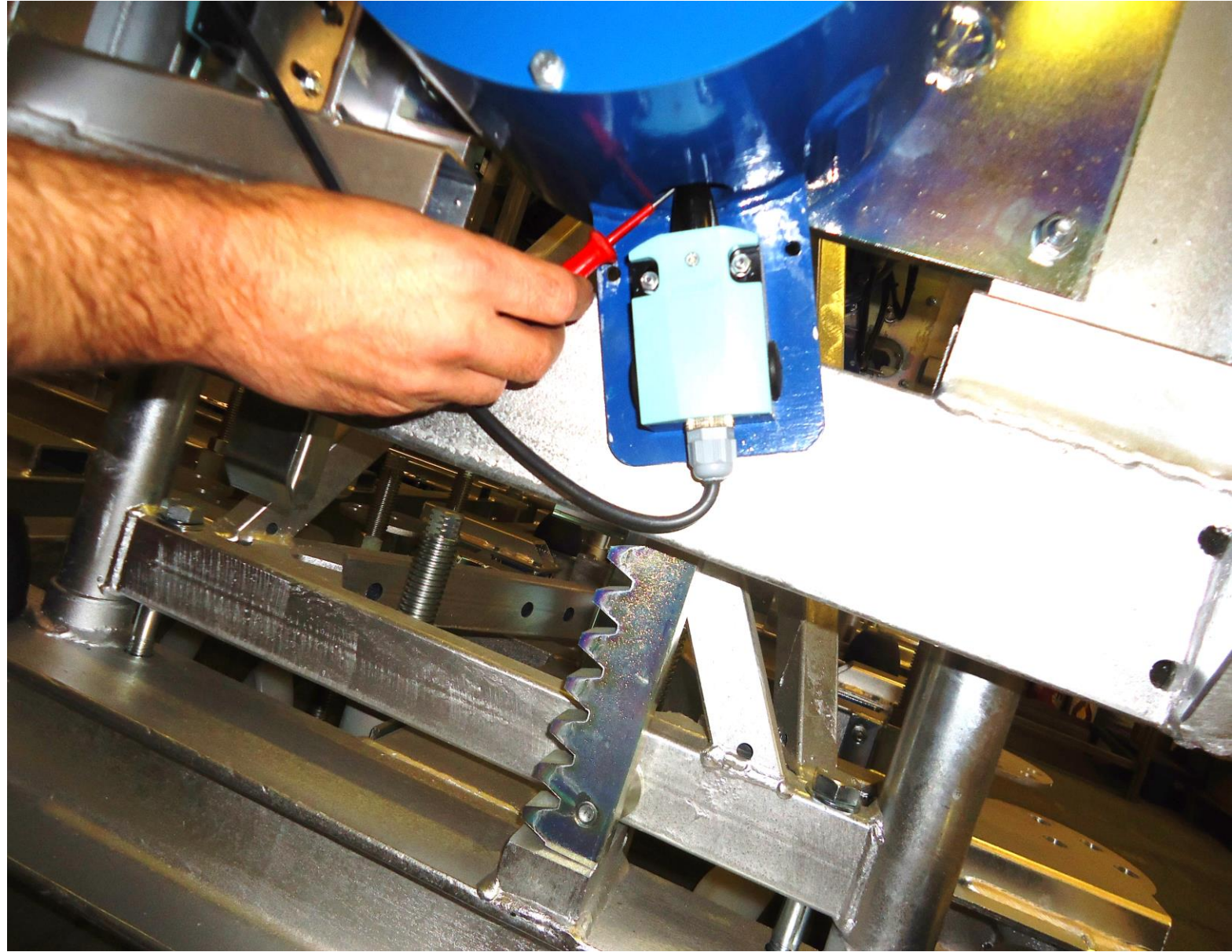


Common mistakes with MCWP & Hoists

Overload
or load
improperly



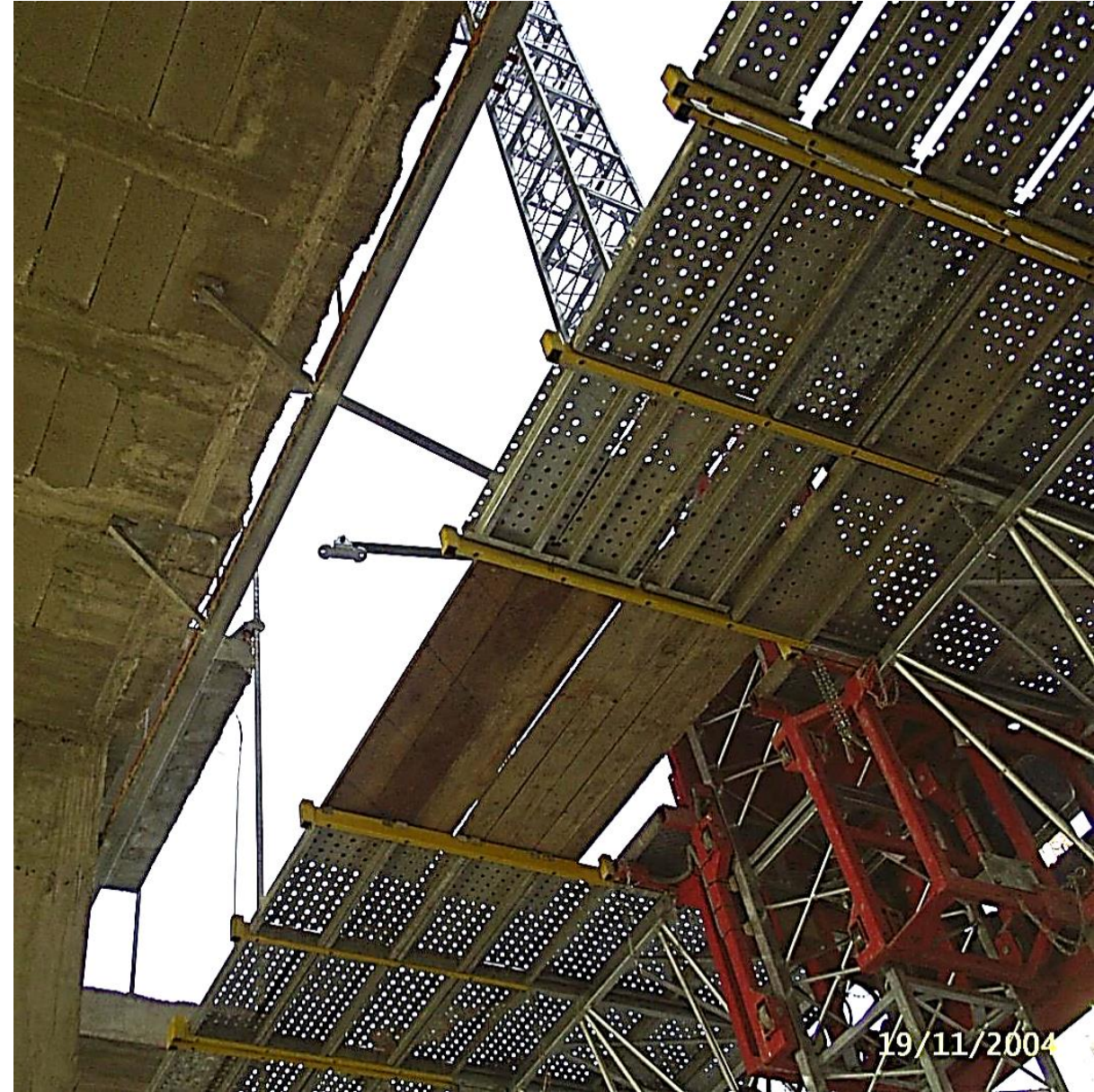
Override safety elements



Disassemble protections



Alter
the original
configuration



Access unauthorised areas



Common mistakes with MCWP & Hoists

**Poor
maintenance**



Common mistakes with MCWP & Hoists

All
of the
above



Common mistakes with MCWP & Hoists

Summary

ERECTION/DISMANTLING

- Faulty configuration
- Missing parts
- Out of procedure/manufacturer instructions

OPERATION

- Overload or load improperly
- Override safety elements
- Disassemble protections
- Alter the original configuration
- Access unauthorized areas
- Poor maintenance
- ...



And all those mistakes cause

- ⚠ Breakdowns
- ⚠ Accidents
- ⚠ Economic losses
- ⚠ Bad name



Consequences

And all those mistakes cause

⚠ Fatalities



And... what can we **DO
about that?**

What can we do about that?



If risk perception is something **subjective**...

let's transform it into **objective FACTS**

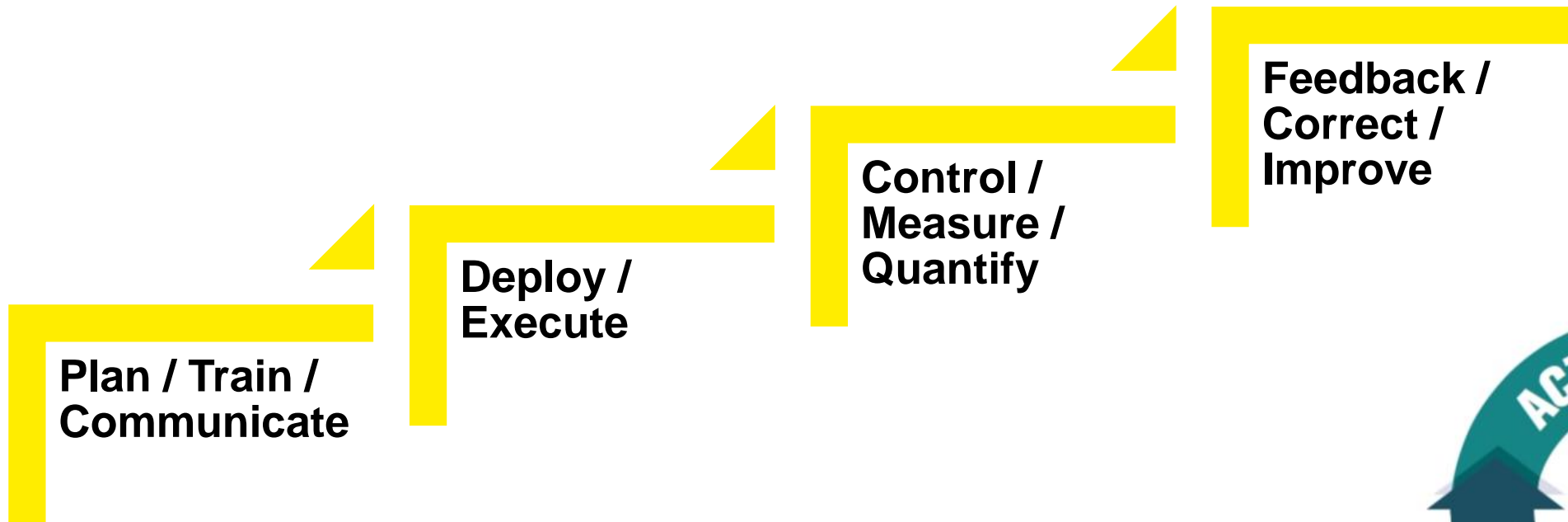
Safe planning of MCWP&Hoist erection and use

1. Definition of optimal piece of equipment
2. Erection planning
3. Site survey
4. Method statement for safe erection
5. Risk assessment
6. Erection and handover
7. Operator training & familiarization
8. Regular checks & maintenance plan



What can we do about that?

How to transform risks into an **objective FACT**



What can we do about that?



Commitment among all the **players
in this small industry**

Manufacturers

Distributors

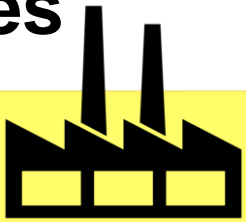
Rental companies

Users

What can we do about that?

Commitment among all the **players** in this industry

Different
roles



Different
responsibilities

Same
target

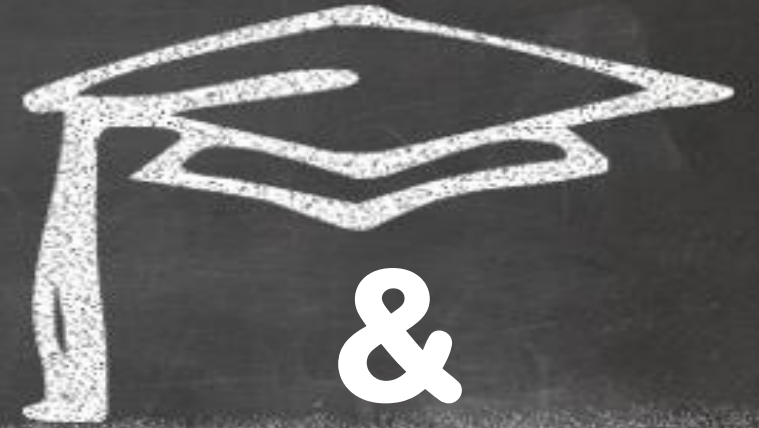


Make our
industry
safer

What can we do about that?

The importance
of
training

EDUCATION



&

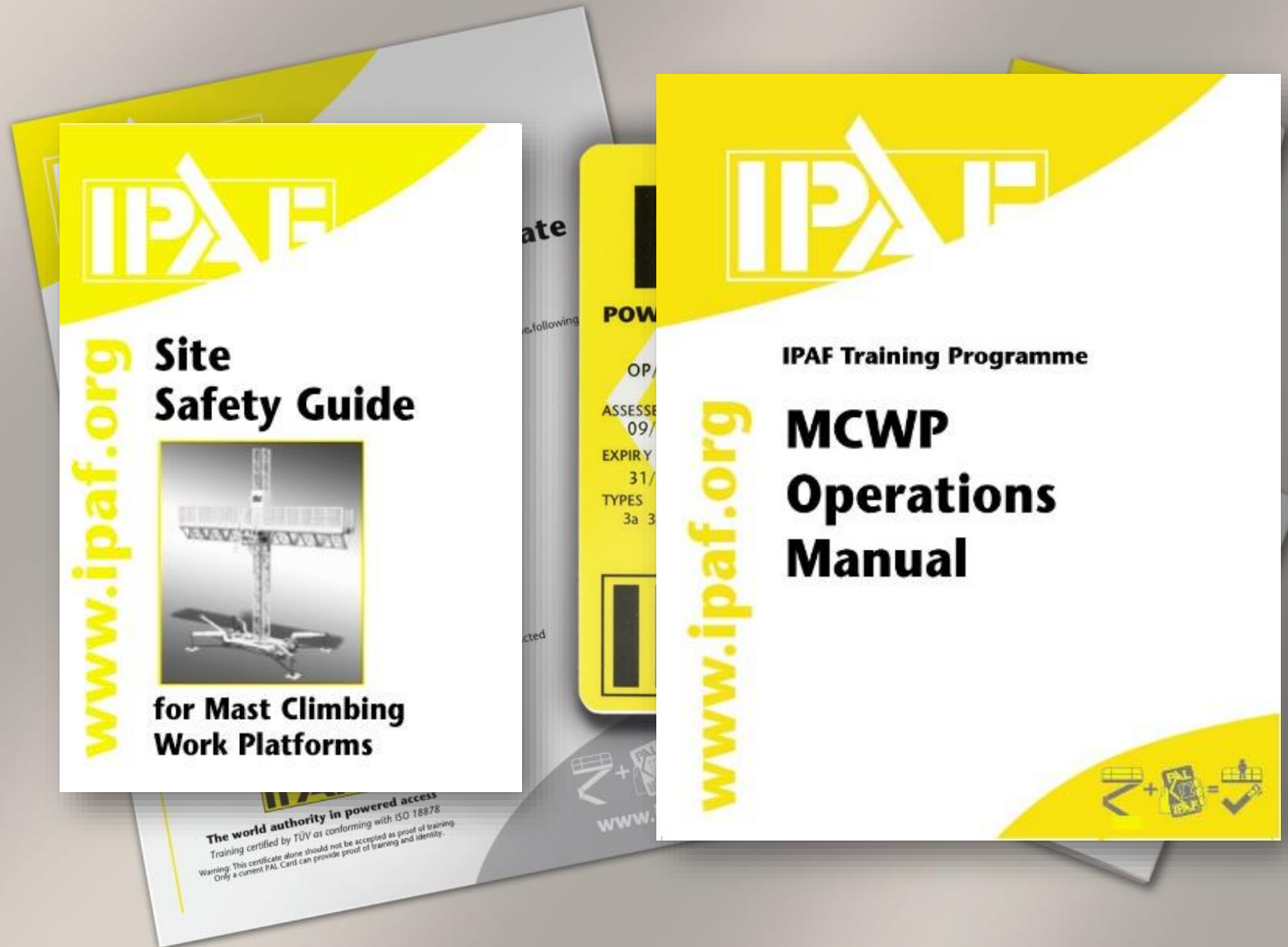
TRAINING



How IPAF can help you



High quality and
specific training for
MCWPs and Hoists



PAL **Grades/Categories for** **Mast Climbing Work** **Platforms**

OP	Operator
----	----------

OP(M)	Mobile Operator
-------	-----------------

D	Demonstrator
---	--------------

INST	Installer
------	-----------

INST(A)	Advanced Installer
---------	--------------------

T	Trainer
---	---------

How IPAF can help you



PAL Grades for construction Hoists

OP	Operator
D	Demonstrator
INST	Installer
INST(A)	Advanced Installer
T	Trainer

PAL Categories for construction Hoists

Goods Hoist (GH)	Transport Platform (TPH)	Passenger Hoist (PH)
---------------------	-----------------------------	-------------------------

How IPAF can help you



PAL card

PAL CARD FEATURES

The PAL Card is valid for five years.

It shows the date on which the holder was assessed and the expiry date by which re-training would be needed.

It shows the types of equipment that the holder has been trained to operate.

It has security features including a holographic logo and the holder's photograph and signature to prevent mis-use.

The Smart PAL Card is marked by a wireless icon and has a chip embedded in it.



How IPAF can help you



Smart PAL card

Access control

Verify if pre-use checks

Electronic logbook

Can be integrated

**IPAF's
PAL Card
is getting
Smarter!...**

**...it can make the
industry safer by
controlling access
to machines**

The image shows a large, glowing green PAL card with a photo of a man, a chip, and the text 'POWERED ACCESS LICENCE'. In the background, there are several yellow aerial work platforms (AWPs) and a glowing blue circuit-like graphic.

What can we do about that?

**Smart PAL card
used to control
access and track
operation**



How IPAF can help you



Safety campaigns



How IPAF can help you



Safety campaigns



How IPAF can help you



Online tools

The world authority in powered access

Verify PAL Card My Account NORTH AMERICA / EN

IPAF.org MEMBERS TRAINING TOOLS & RESOURCES ABOUT IPAF MORE ▾

Keyword search

FREE ELEARNING OFFER FOR USA AND CANADA RESIDENTS, CLICK TO FIND OUT MORE.

IPAF promotes the safe and effective use of powered access equipment worldwide

LEARN MORE ABOUT US

Need to check the status of an operator's PAL Card and their details? Lost a PAL Card?

VERIFY A PAL CARD

New to Powered Access? Here's what you need to know.

FIRST-TIME USERS

FIND A TRAINING CENTRE

REPORT AN ACCIDENT

Join IPAF:

- ✓ Help make the industry safer
- ✓ Influence regulation and legislation
- ✓ Member-only benefits

BECOME AN IPAF MEMBER



Thank You!