



P.O. Box 1160, St. Joseph, MO 64502-1160

Phone: (800) 255-0317, Fax: (785) 989-3075

Technical Communications Bulletin 17.023

ECRN 2017-0697

Rev A

Date: August 1, 2017

Priority Status:

Table with 2 columns: Selection box and Priority description. Row 1: P1: needs completed at your earliest opportunity. Row 2: P2: needs completed at the next service. Row 3: P3: product improvement completed as needed. Row 4: X P4: instructions only (IP)

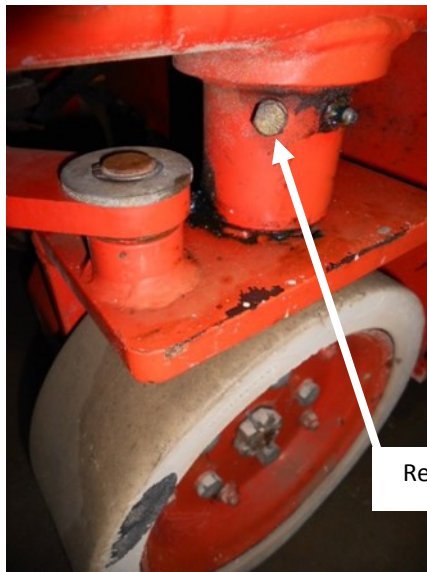
Read and Fully understand this Technical Communications Bulletin before beginning. Follow instructions completely. If you should have any questions or concerns regarding this Technical Communications Bulletin, please contact your area Regional Product Support Representative or your local Snorkel Product Support Department.

This procedure applies to all S1930 and S1930E machine models. The purpose of this bulletin is to inspect the spindle retaining bolt for abnormal wear. If during inspection the bolt has been found to show signs of wear a replacement bolt will need to be ordered from your local Snorkel Parts Department.

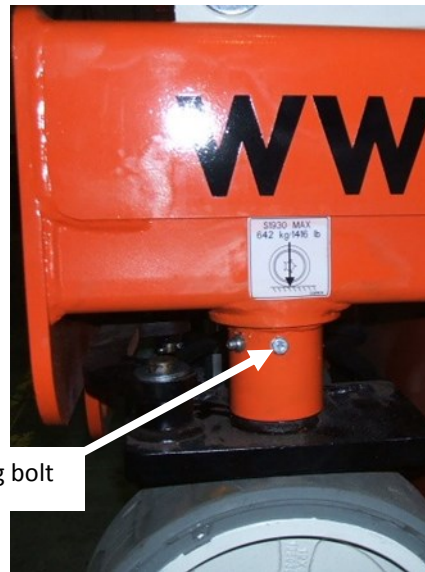
This procedure will take approximately 30 minutes to perform.

Table with 3 columns: Machine Model, Part Number, and Description. Rows include S1930 BUILT PRIOR TO SEPTEMBER 2010 and S1930E BUILT AFTER SEPTEMBER 2010 with their respective parts and quantities.

The Snorkel S1930 and S1930E Steering Spindles are each retained in the chassis by a High Tensile bolt, and spring washer. The bolt protrudes into a groove machined onto the Spindle, just far enough to prevent the spindle falling out of the chassis if the machine is lifted by a forklift or crane, but not far enough to make contact with the spindle during normal operation.



S1930



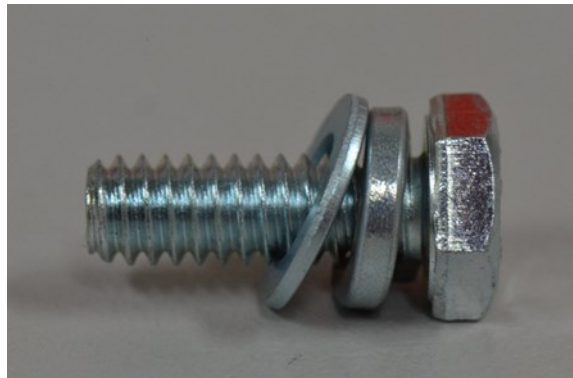
S1930E

Retaining bolt

In time the end of the bolt may wear, particularly if the machine is lifted and moved frequently by crane or forklift. If the end of the bolt wears excessively the Steer Spindle may not be fully retained in the chassis and may fall out when the machine is lifted.



ORIGINAL BOLT LENGTH ON THE LEFT,
WORN BOLT ON THE RIGHT



NEW BOLT WITH SPRING WASHER AND FLAT
WASHER

During all Quarterly and Annual Routine Inspections, remove and check the retaining bolt on both steer spindles for wear and replace as required - refer to the parts listed above. Replacement bolts will be longer than the original bolts, so a flat washer **must** be used in conjunction with the spring washer. Ensure the spindle rotates freely without binding.

Note: Some early S1930E machines were not fitted with a grease nipple. On these machines it is not necessary to fit a grease nipple – do **NOT** replace the retaining bolt with a grease nipple.



For Further Information in North and South America

Contact the Snorkel Service Department at:

Phone: 1-800-255-0317 or 1-785-989-3091

Fax: 1-785-989-3075

Or contact the Snorkel Service Department via email at:

tdeathrage@xmfg.com

gary.wampler@snorkellift.com

kevin.mccarter@snorkellifts.com

jerry.simmons@snorkellifts.com

allan.kelly@xmfg.com

chuck.adkins@xmfg.com

mike.koon@xmfg.com

samld@xmfg.com

Further Information in EMEA

Contact the Snorkel Service Department at:

Phone: +44 (0) 191 4616909 / +44 (0) 191 4616910

Or contact Technical Support via email at:

mark.hutchinson@snorkellifts.com

brian.aitchison@snorkellifts.com

neil.brown@snorkellifts.com

erik.debruijn@snorkellifts.com

kevin.handley@snorkellifts.com

For Further Information in Australia

Contact the Snorkel Service Department at:

Phone: 1300 700 450

Or contact Technical Support via email at:

bruce.maclean@ahernaustralia.com.au

david.wynne@ahernaustralia.com.au

For Further Information in Asia Pacific

Contact the Snorkel Service Department at:

Phone: 03-5765-6841

Or contact Technical Support via email at:

Fun Fook Wai : fw.fun@snorkellifts.com

For further Information in Asia (Japan)

Contact the Snorkel Service Department at:

Phone: 03-5765-6841

Or contact Technical Support via email at:

sakuma@snorkeljp.com