	FEDERATION EUROPEENNE DE LA MANUTENTION Product Group MEWPs	FEM
	A brief guide for identification of non-compliant MEWPs	11.2011 (E)

I n d e x

Section	Page
0 Most common items of non-compliance with EU regulations:.....	3
1 Identification of machine and manufacturer	4
2. Documents	5
3. Instructions	6
4. Engine exhaust emissions	7
5. Diesel engine compliance.....	8
6. Noise emissions.....	9
7. Warnings and markings.....	10

Fédération Européenne de la Manutention (Product Group MEWPs)

0 Most common items of non-compliance with EU regulations

- › Marking
- › Documents
- › Instructions
- › Diesel engine emissions
- › Noise emissions
- › Warnings/markings

Typical Machine Types



Boom type



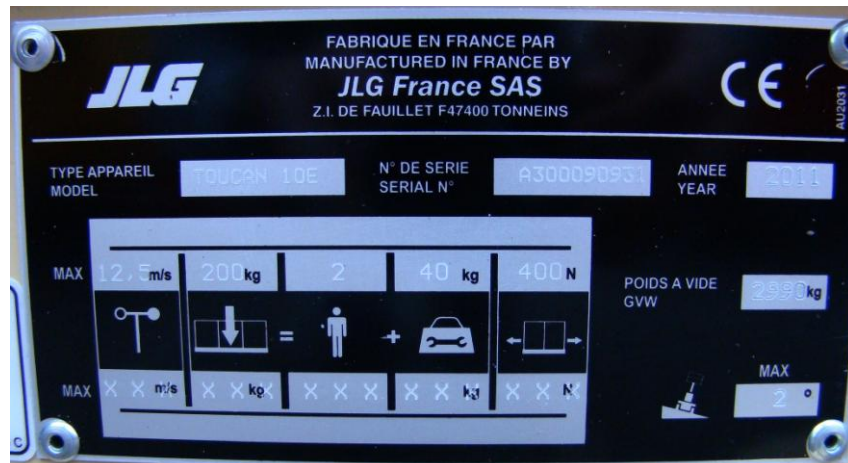
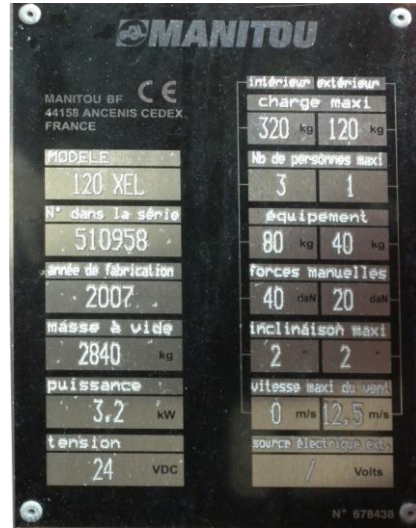
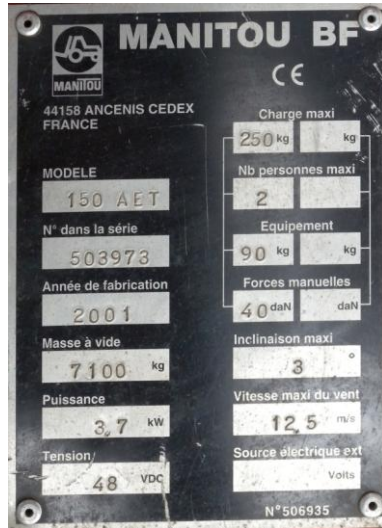
Scissor Type

A brief guide for identification of non-compliant mobile elevating work platforms (MEWPs)

1 Identification of machine and manufacturer

All mobile elevating work platforms placed on the EU market must be marked clearly and permanently with the following, in one of the languages of the Community:

- › Name and address of the manufacturer (and their EU representative, if appropriate)
- › The CE mark
- › Designation of the machinery
- › Serial number of the machinery
- › The year of construction
- › The electrical supply (machines with an external supply)
- › The weight of the machine in kg



These markings are compliant

CE mark can be made by methods, scenario A or scenario B. to comply with the machinery directive

	<u>Scenario A:</u> Type-examination	<u>Scenario B:</u> Full quality assurance procedure
CE mark	CE mark	CE mark followed by the identification number of the notified body
Included in the EC declaration of conformity	- Name, address and identification number of the notified body which carried out the type-examination; - The number of the type-examination certificate	- Name, address and identification number of the notified body which approved the full quality assurance system

2. Documents

All construction machinery placed on the EU market first time must be accompanied by a declaration of conformity. The Declaration of Conformity for different directives can be separate.

The Declaration of Conformity is a critical document which shows which **EU directives** the machine complies with. It must be in a **community language** and must include at **least** the following:

- A statement that the machine meets the requirements of the following EU directives:
 - > 2006/42/EC – the Machinery Directive;
 - > 2000/14/EC – the Directive on Noise Emissions in the Environment by Equipment for Use Outdoors (only for internal combustion powered machines);
 - > 2004/108/EC – the Directive on Electromagnetic Compatibility.
- The name and address of the manufacturers and of his EU representative, if applicable.
- A description of the machine, including designation and serial number. The serial number on the document must be the same as that marked on the machine.
- Name and address of the person in the EU who can be contacted to compile the technical file about the safety of the machine if requested to do so by a suitable EU authority.
- The name and address of the person who keeps the technical documentation on noise emissions and the name of notified body involved.
- The conformity assessment procedure followed for noise emissions (e.g. Annex VI Procedure 1).
- The measured sound power level.
- The guaranteed sound power level.
- The date and place of the declaration
- Identity and signature of the person making the declaration.

A brief guide for identification of non-compliant mobile elevating work platforms (MEWPs)

ANY PLATFORMS LTD	<i>EC DECLARATION OF CONFORMITY</i>		
Manufacturer	Any Platforms		
Address	123 Some Street Any Town Any Country		
Technical File:	Any Platforms 123 Some Street Any Town Any Country in E.U		
Contact:	A European	Position:	Engineer
Machine Type:	Mobile Elevating Work Platform		
Model Type:	Sample		
Serial Number:	00XX000001		
Notified Body:	Some Notified Body Ltd		
EC Number:	0XYZ		
Address	123 Any Street Some Town Anywhere in E.U		
Certificate Number:	<u>0101010101</u>		
Reference Standards:	EN12100-1 & 2:2003 + A1:2009 EN280:2001 + A2:2009		
Any Platforms hereby declare that the above mentioned machine conforms with the requirements of:			
2006/42/EC	Machinery		
2004/108/EC	EMC Directive		
2000/14/EC	Outdoor Noise		
2005/88/EC	Amending 2000/14/EC		
Signature:	_____	Date:	<u>27 October 2011</u>
Name:	Claude R. Dubé	Position:	Director
		Place:	Somewhere, Europe
Remark: Any modification to the above described machine violates the validity of this declaration This declaration conforms with the requirements of annex II-A of the council directive 2006/42/EC			

Example of Declaration of Conformity

3. Instructions

Instructions on the safe use are a requirement of EU law and must accompany each machine. The basic require-

ments are:

- › They must be in the language of the member state where the machine is placed on the market or put into service.
- › They must be either “Original instructions” or a “Translation of the original instructions”, in which case the translation must be accompanied by the original instructions.
- › The words “Original instructions” must appear on the language version(s) verified by the manufacturer or his authorised representative. Where no “Original instructions” exist and translations have been provided the translations must bear the words “Translation of the original instructions”.
- › The instructions must include the name and address of the manufacturer.
- › The instructions must include a repeat of the machine markings, except for the serial number.
- › The instructions must include a repeat of the main items of the Declaration of Conformity.
- › The instructions must contain measurement results for noise and vibration levels at the operator position for this type of machine.

4. Engine exhaust emission

All diesel engines from 18 to 560 kW in MEWPs must comply with European Directive 97/68/EC (as amended) when the engine is placed on the EU market for the first time. For machines imported into the EU the engine is placed on the market when the machine clears customs.

The compliance of the engine can be checked as follows:



Open the engine hood and look for the data plate on the engine, as in the following example. It is a requirement of the directive that the plate is visible in the machine. If there is no data plate visible the machine is non-compliant.

A brief guide for identification of non-compliant mobile elevating work platforms (MEWPs)



Engine power

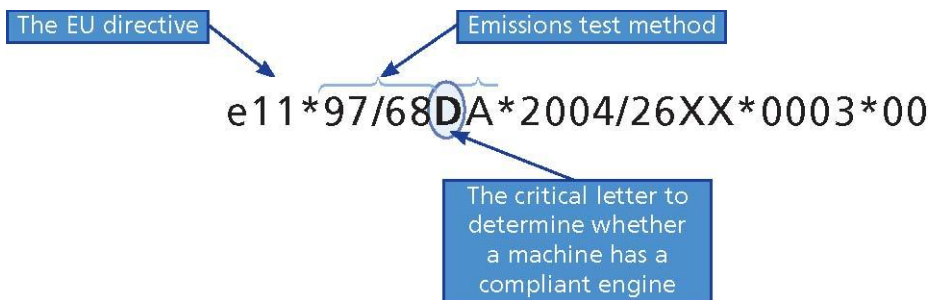
This plate is compliant with the rules

Type approval number

5. Diesel engine compliance

To confirm the compliance of the engine it is only necessary to check one letter of the EC Type Approval Number, which gives information about compliance with regard to date of placing on the EU market.

The format of the “EC TYPE APPROVAL NO” on the engine data plate is as follows



(e1*97/68DA*2004/26KA*0073*06)

The critical letter relates to the emissions level and to the end date for legally selling the engine in the EU. The following table shows the last allowable date for first placing an engine installed on a machine on the EU market based on the critical letter.

A	31/12/2003	G	31/12/2009	L	31/12/2015
B	31/12/2004	H	31/12/2012	M	30/09/2016
C	31/03/2005	I	31/12/2013	N	30/09/2016
D	31/12/2008	J	31/12/2014 (for power < 56 kW)	P	No expiry
E	31/12/2007	J	31/12/2013 (for power ≥ 56 kW)	Q	No expiry
F	31/12/2008	K	No expiry	R	No expiry

In the example above an engine with this EC Type Approval Number could not be placed on the EU market for the first time after 31/12/2008.

In some special circumstances an engine can be legally placed on the market after these dates under the “flexibility scheme”. If so it will be marked “Engine placed on the market under the flexibility scheme”. The machine will also have additional markings giving details of the flexibility scheme applied.

6. Noise emissions

All mobile elevating work platforms must be marked with their guaranteed sound power level.

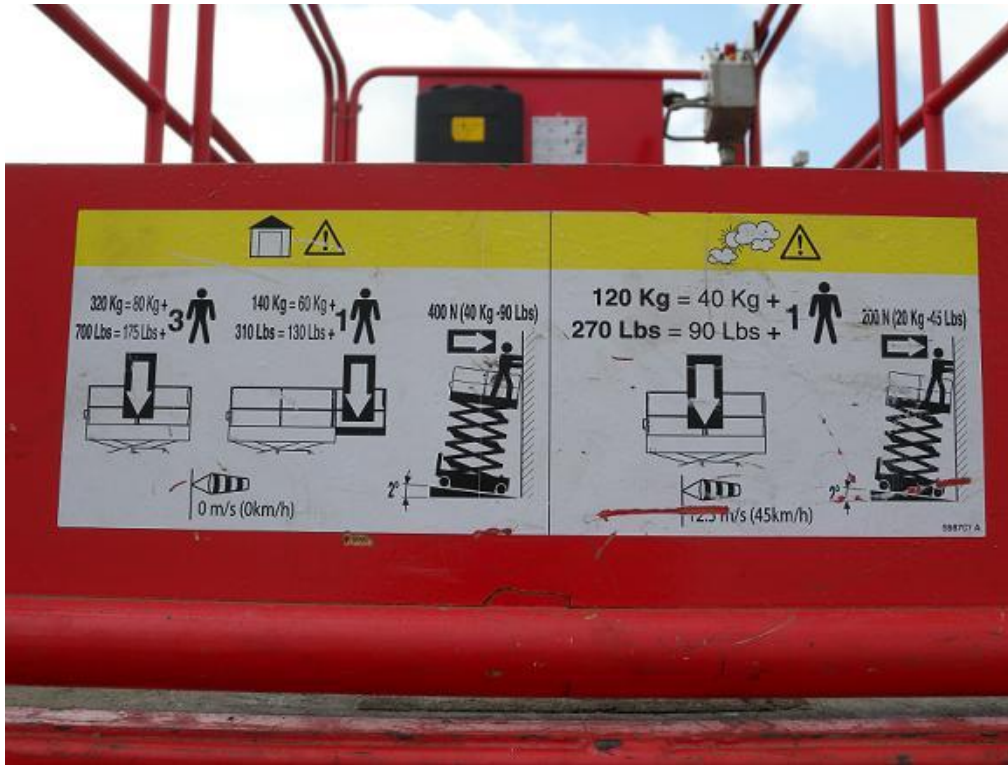


Compliant example

A brief guide for identification of non-compliant mobile elevating work platforms (MEWPs)

7. Warnings and markings

Information and warnings on machinery must be in pictograms or in a language of the Community for the country where the machine is placed on the market or put into service.



Compliant example



Non compliant example: text in Korean